

# ONE PHASE

CIVIL TECHNIK (PTY) LTD

COMPANY PROFILE



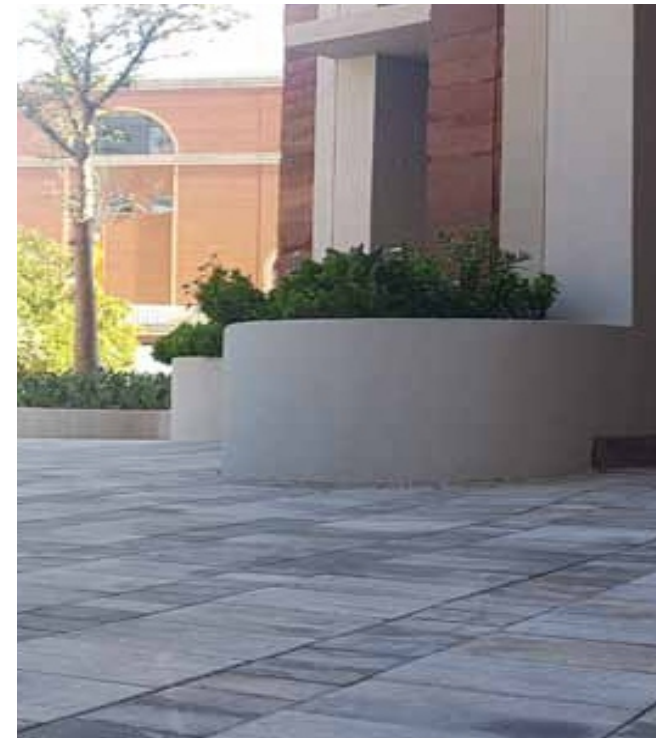
CIVIL CONSTRUCTION • LANDSCAPING • ROAD MARKING • SOLAR ENERGY

# COMPANY PROFILE

T +27 10 023 6028 • M +27 84 658 8057 • F 086 479 7296 • E info@onephase.co.za •  
09 Judges Street, Cresta, Johannesburg, 2194 •  
www.onephase.co.za

Onephase Civil Technik (Pty) Ltd is a medium size private company founded by Abraham & Angela kalibuku in 2012 and has years of industry specific experience in working on tendered projects with municipalities, international investors, subcontracting and private individuals. Our head office is based at Welridge, Johannesburg and our offices situated on Northcliff Cresta."

**ONEPHASE**  
CIVIL TECHNIK (PTY) LTD



CIVIL CONSTRUCTION • LANDSCAPING • ROAD MARKING • SOLAR ENERGY

Onepahse Civil Technik is a medium size private company founded in 2012

We specialize in **landscape design and installation, Road Markings construction, Solar System design and installation, and civil engineering services.**

Our head office is based in Welridge and our office is situated in Northcliff Cresta



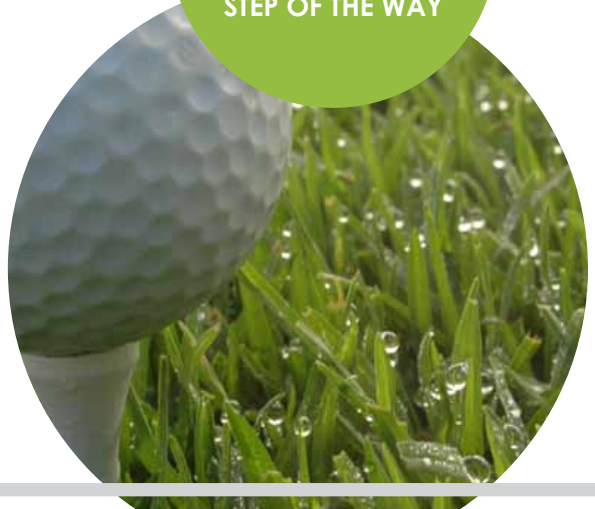
# INTRODUCTION

## WHO ARE WE?

Onephase Civil Technik (Pty) Ltd is a medium size private company founded by Abraham and Angela March 2012 with more than a decade of industry specific experience in working on tendered projects with municipalities, international investors, subcontracting and private individuals. **We specialize in Landscape design and installation, Road Marking, General construction, Solar System design and installation and Civil Engineering services.** We offer turnkey solutions for all external site works.

Our head office is based Welridge, Johannesburg and our offices is situated in Cresta Northcliff. Going forward, we are committed to personal involvement at all stages of projects awarded to **Onephase Civil Technik.** **Responsibilities includes procuring projects, project planning, implementation, management of and all associated procurement.**

WE PROMISE  
PERSONAL  
COMMITMENT EVERY  
STEP OF THE WAY





CIVIL CONSTRUCTION • LANDSCAPING • ROAD MARKING • SOLAR ENERGY

# MISSION STATEMENT

To deliver the best product and service in the most cost efficient way possible to any client and to build healthy business relations in the industry that knows us by reputation.

# VISION

Landscaping is an essential, value adding element of all construction projects and it must be catered for up-front as part of the design and planning phases.

# VALUES / CORPORATE RESPONSIBILITY

Onephase Civil Technik (Pty) Ltd works with committed, productive employees, agents, and suppliers to create good services, loyal, satisfied customers and consumers.

All installations are done by well trained staff and managed by supervisors specifically trained to execute efficiently. Onephase Civil Technik (Pty) Ltd recognizes its obligations to act responsibly, ethically and with integrity in all its dealings, its staff, customers and the environment. Our business ethics contributes to our reputation for integrity as key to secure the loyalty of our customers and becoming the business partner of choice. It will always be our policy to conduct business in compliance with all applicable laws and regulations and in accordance with the highest ethical standards.

# LANDSCAPING



# ROAD MARKINGS







# CIVIL CONSTRUCTION



# WHAT WE DO

## INSTANT LAWN

- We specialize in the installation of **new lawns**
- We establish lawns by means of **sod, sprig and seed**
- We do **domestic** and **commercial** installations
- We specialize in **sports field** construction
- We do **parks** and **golf courses**
- **Bush Tree** Cutting and felling



# LANDSCAPING

*From design...*

*to completion*



# WHAT WE DO

## LANDSCAPING

Landscaping can change any atmosphere in any surrounding, combining aesthetics, nature and culture in a contemporary practice for YOUR enjoyment.

We create **beautiful gardens**, passionately and professionally. Adding value to your property.

We specialize in the **design and construction** of **parks, sports grounds, commercial landscaping, domestic landscaping, landscape design, installation and maintenance.**

Our unique approach enables us to offer our clients the most **flexible** garden design and landscaping service available.

We pride ourselves on our Professional **approach** and **high level** of service. Our attention to detail and close supervision ensures that every job undertaken is performed to the **highest standard** and we endeavour to exceed the expectations of our clients every step of the way.



# WHAT WE DO

## HARD LANDSCAPING

Hard landscaping describes the **physically hard construction materials which are used** to improve architectural features in a landscaped area.

Onephase Civil Technik is actively involved with projects tackling **pattern paving**, installation of **bollards**, supply and erection of any type of **playground** equipment and custom made **external furniture** and playground equipment in a variety of different environments, from **residential complexes** to municipal **recreation areas** and **domestic** applications.



# HARD LANDSCAPING



# WHAT WE DO

## IRRIGATION

Onephase Civil Technik will undertake full design, procurement, installation and commissioning of all irrigation systems, manual or automated, for domestic, commercial, sports and agricultural facilities. We have **experience in agricultural, commercial and domestic irrigation systems**. We specify and install the pump and reservoir station required.

### Irrigation systems and types we have installed:

- Drip and sprinkler systems
- Centre pivot and lateral move systems
- Manual and automated systems
- Rain water harvesting, tailings and dust suppression
- Sports field, golf course and horse arena's
- Domestic, commercial and dragline systems
- Irrigation travellers and self-creeping water cannon
- Sludge and effluent irrigation
- Pole mounted overhead irrigation
- Misting irrigation for propagation





# HYDROSEEDING / REHABILITATION



# WHAT WE DO

## HYDROSEEDING / REHABILITATION

We offer **erosion control** methods on construction sites or as an alternative to the traditional process of seed broadcasting. It is very effective on steep slopes and sloping lawns. The advantage of **hydroseeding** is that large areas can be completed in very short timeframes with quick germination results.

Should you require a different vegetation than grass as an end-result, we have a variety of low water requirement plants/groundcovers/creepers that can be used as alternative.



# HARD LANDSCAPING



# WHAT WE DO

## CIVIL ENGINEERING

Onepahse Civil Technik does a range of earthworks. We do **bulk earthworks, earthmoving, road construction** and installation of bulk services such **water reticulations, sewer reticulations, water harvesting systems** and **storm water systems**. We do all mentioned services in combination, or individually as required.

**As specialists in the sports industry,** we do all disciplines regarding a sport field development. From breaking ground to a final product. With the experience of constructing seven IAAF certified athletic fields, we strive for the highest standard possible.

As a cost saving method, TG Precise Engineering introduced **harvesting and screening** of the existing topsoil layer instead of topsoil importation to create a growing medium. This will ensure **better drainage** and provide a **better growing medium** that will save every client on maintenance expenses in the long run and ensure sustainability of the project.





# WHAT WE DO

## GOODS AND SERVICES

- Topsoil, Compost & lawn dressing
- Playground equipment
- Sports equipment and line markings
- External / outdoor furniture
- Landscape design and installation
- Hard landscaping
- Civil engineering
- Bulk earthworks
- Road construction and Markings
- Topsoil screening
- Paving and kerb installation
- Fertilizer applications
- Spring treatments
- Irrigation design and installation
- Laser levelling and precision shaping
- Bush Clearing and cutting
- Solar Energy Solutions



# QUALITY ASSURANCE

All products and materials required to complete an installation or project are purchased from **reputable suppliers** adhering to all **SABS and ISO** codes required by industry regulators and other governing bodies or professional entities that suppliers must adhere to. For additional piece of mind, we have public liability-, works- and contractors all **risk insurances in place.**

# COMMUNITY SOCIAL RESPONSIBILITY INVOLVEMENT

Skills transfer is a main objective for Onephase Civil Technik when employing local E.P.W.P employees, thus supplying skeleton supervisory staff. Individuals are selected from the fields in which they excel or show potential, and are then mentored to improve.

# WHY CHOOSE US

## KNOWLEDGE

We bring over a decade of experience to your project. We have the **creativity** to offer "Out of the box" ideas and designs. We are **familiar** with the correct materials and plants to use for your project. We have the **experience to do the specialized installations** our competitors aren't capable of producing!!

## SERVICE

**We keep our promises** and we deliver what we commit to. As a small company, we value YOU as a client and welcome any type of communication to give you the assurance that your project is headed for the right outcome.

## QUALITY

We have an untarnished reputation and will never sacrifice quality over quantity.





# COMPANY PROFILE

T +27 10 023 6028 • M +27 84 658 8057 • F 086 479 7296 • E info@onephase.co.za •  
09 Judges Street, Cresta, Johannesburg, 2194 •  
www.onephase.co.za

**ONEPHASE**  
CIVIL TECHNIK (PTY) LTD



CIVIL CONSTRUCTION • LANDSCAPING • ROAD MARKING • SOLAR ENERGY